



**REGIONAL SPECIALISED METEOROLOGICAL CENTRE-TROPICAL CYCLONES, NEW DELHI  
TROPICAL WEATHER OUTLOOK**

---

**DEMS-RSMC TROPICAL CYCLONES NEW DELHI DATED 06.10.2021**

**TROPICAL WEATHER OUTLOOK FOR NORTH INDIAN OCEAN (THE BAY OF BENGAL OF BENGAL OF BENGAL AND ARABIAN SEA) VALID FOR NEXT 120 HOURS ISSUED AT 0600 UTC OF 06.10.2021 BASED ON 0300 UTC OF 06.10.2021.**

**BAY OF BENGAL:**

A LOW PRESSURE AREA IS VERY LIKELY TO FORM OVER NORTH ANDAMAN SEA AROUND 10TH OCTOBER. IT IS LIKELY TO BECOME MORE MARKED AND MOVE WEST-NORTHWESTWARDS TOWARDS SOUTH ODISHA - NORTH ANDHRA PRADESH COASTS DURING THE SUBSEQUENT 4-5 DAYS.

SCATTERED LOW AND MEDIUM CLOUDS WITH EMBEDDED INTENSE TO VERY INTENSE CONVECTION LAY OVER EASTCENTRAL ADJOINING SOUTHEAST BAY OF BENGAL. SCATTERED LOW AND MEDIUM CLOUDS WITH EMBEDDED MODERATE TO INTENSE CONVECTION LAY OVER NORTHEAST & REST SOUTH OF BAY OF BENGAL AND ANDAMAN SEA.

**PROBABILITY OF CYCLOGENESIS (FORMATION OF DEPRESSION) DURING NEXT 120 HRS:**

24 HOURS	24-48 HOURS	48-72 HOURS	72-96 HOURS	96-120 HOURS
NIL	NIL	NIL	NIL	LOW

**ARABIAN SEA:**

SCATTERED TO BROKEN LOW AND MEDIUM CLOUDS WITH EMBEDDED INTENSE TO VERY INTENSE CONVECTION LAY OVER EASTCENTRAL ARABIAN SEA, SOUTHEAST ARABIAN SEA AND COMORIN. SCATTERED LOW AND MEDIUM CLOUDS WITH EMBEDDED ISOLATED MODERATE TO INTENSE CONVECTION LAY OVER WESTCENTRAL ARABIAN SEA SOUTHWEST ARABIAN SEA.

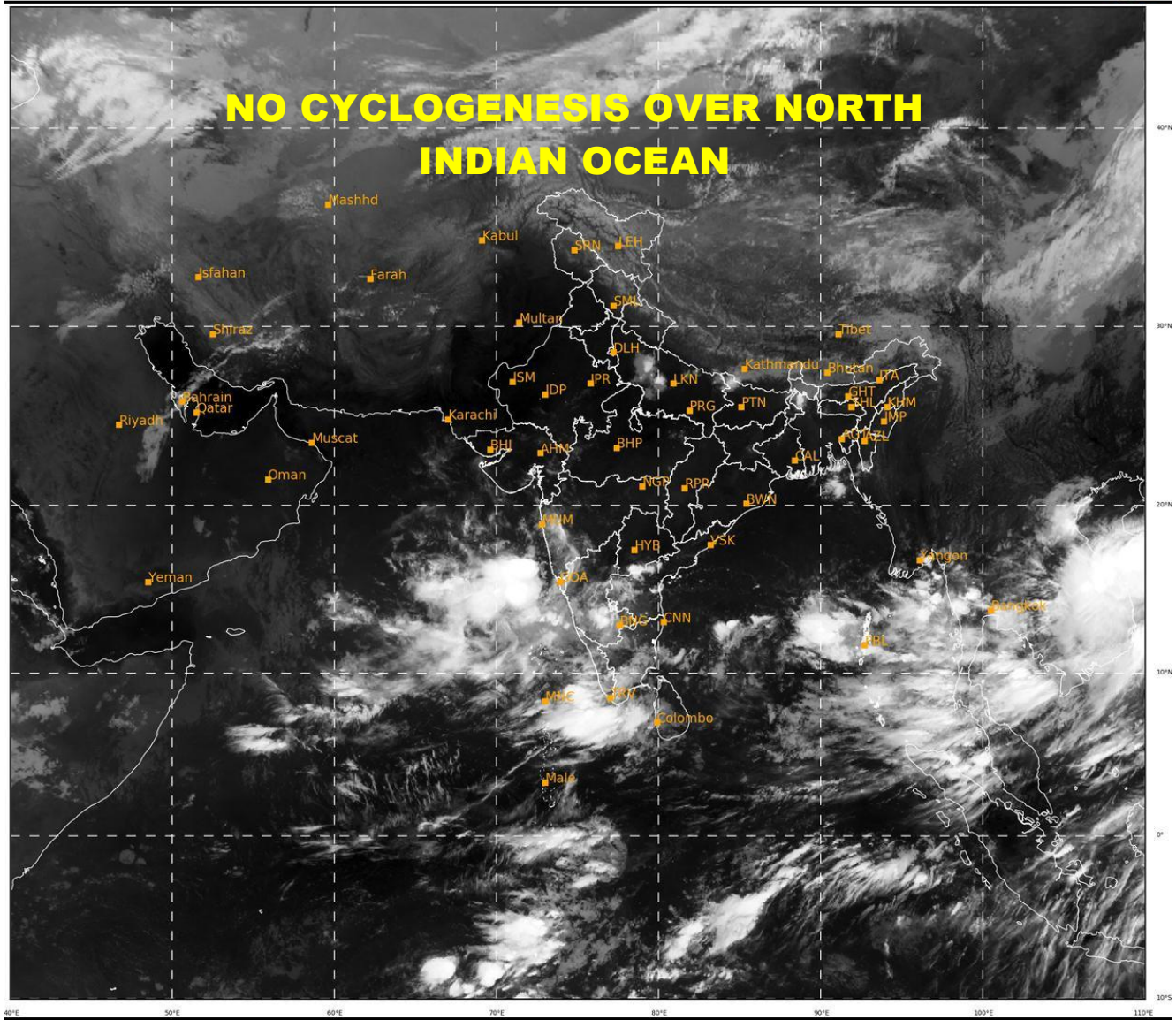
**PROBABILITY OF CYCLOGENESIS (FORMATION OF DEPRESSION) DURING NEXT 120 HRS:**

24 HOURS	24-48 HOURS	48-72 HOURS	72-96 HOURS	96-120 HOURS
NIL	NIL	NIL	NIL	NIL

**REMARKS:** NIL

SAT : INSAT-3D IMG  
IMG\_TIR1 10.8 um  
LIC Mercator

06-10-2021/(0300 to 0326) GMT  
06-10-2021/(0830 to 0856) IST



510

933

IMD, DELHI

PROBABILITY OF CYCLOGENESIS (FORMATION OF DEPRESSION):NIL: 0%, LOW: 1-25%, FAIR: 26-50%, MODERATE: 51-75% AND HIGH: 76-100%  
This is a guidance Bulletin for the WMO/ESCAP Panel Member countries., Please visit respective National websites for Country specific Bulletins